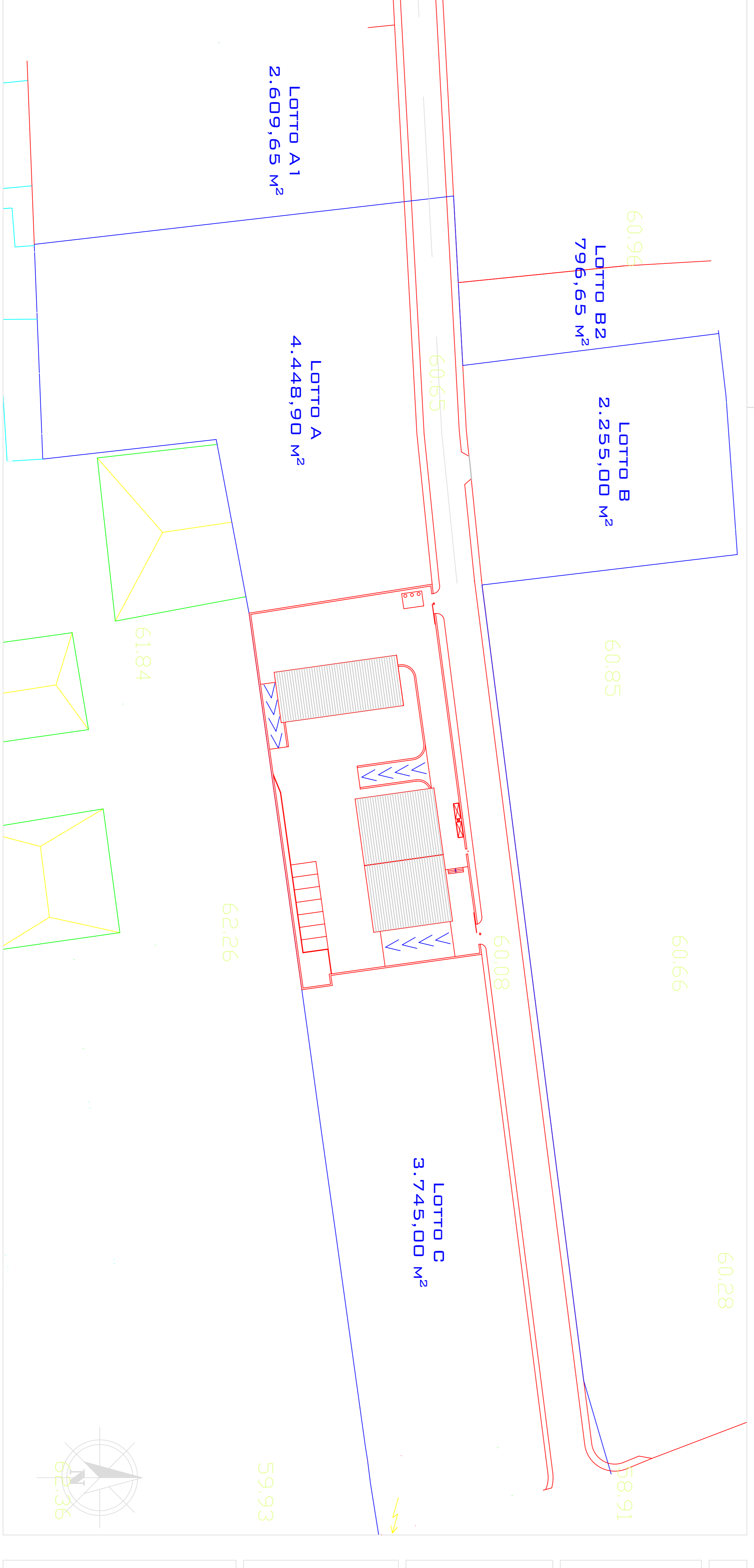
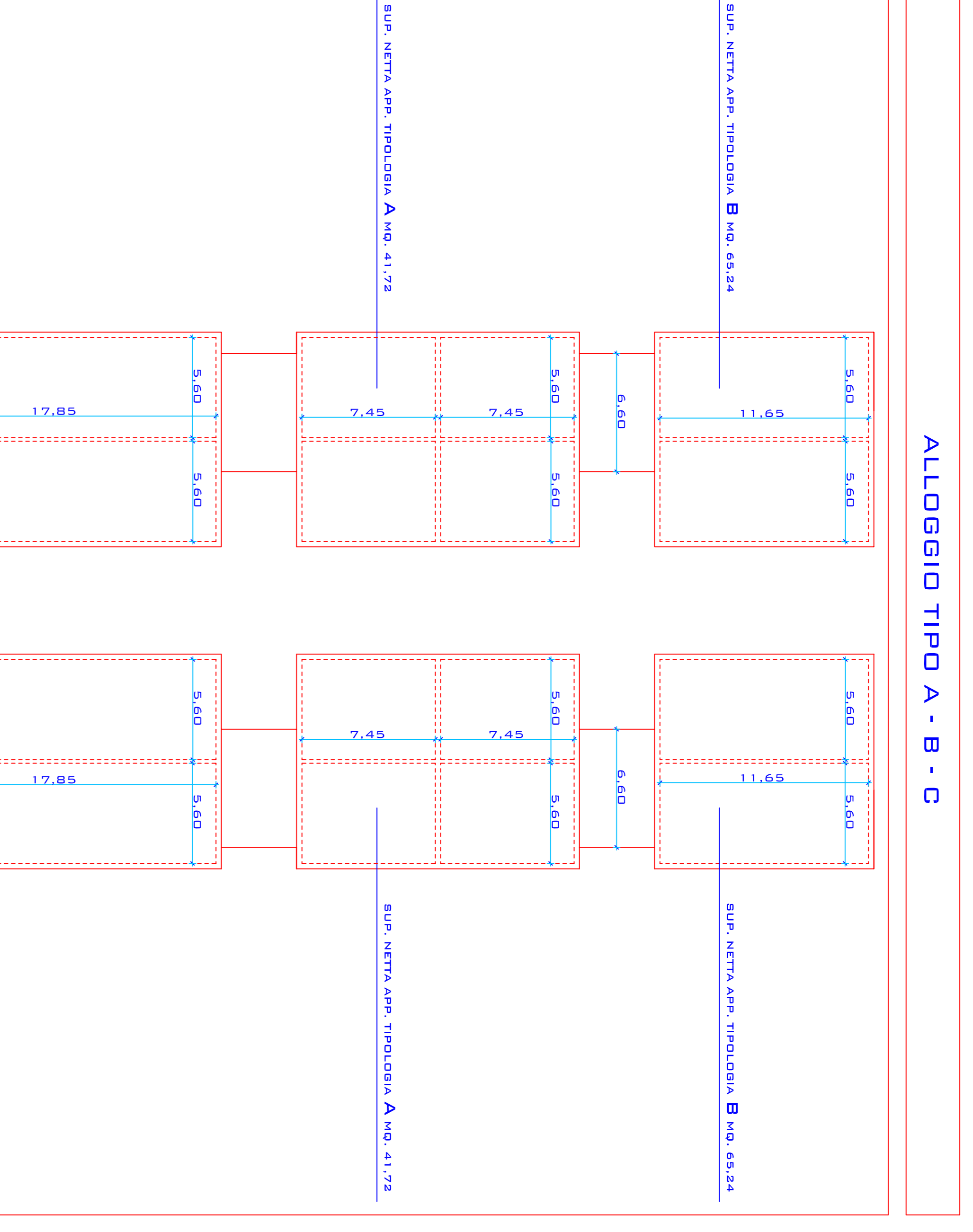
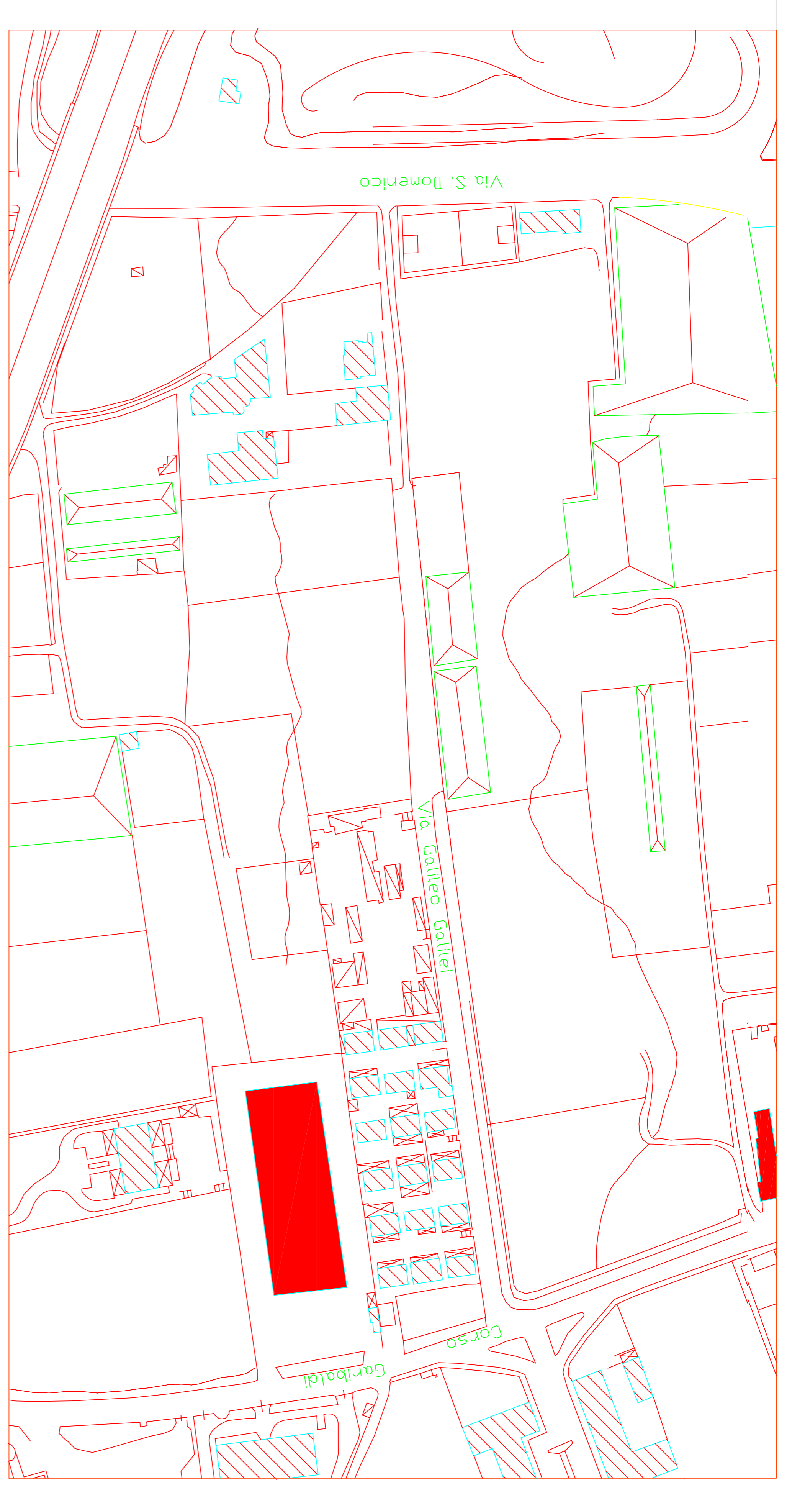
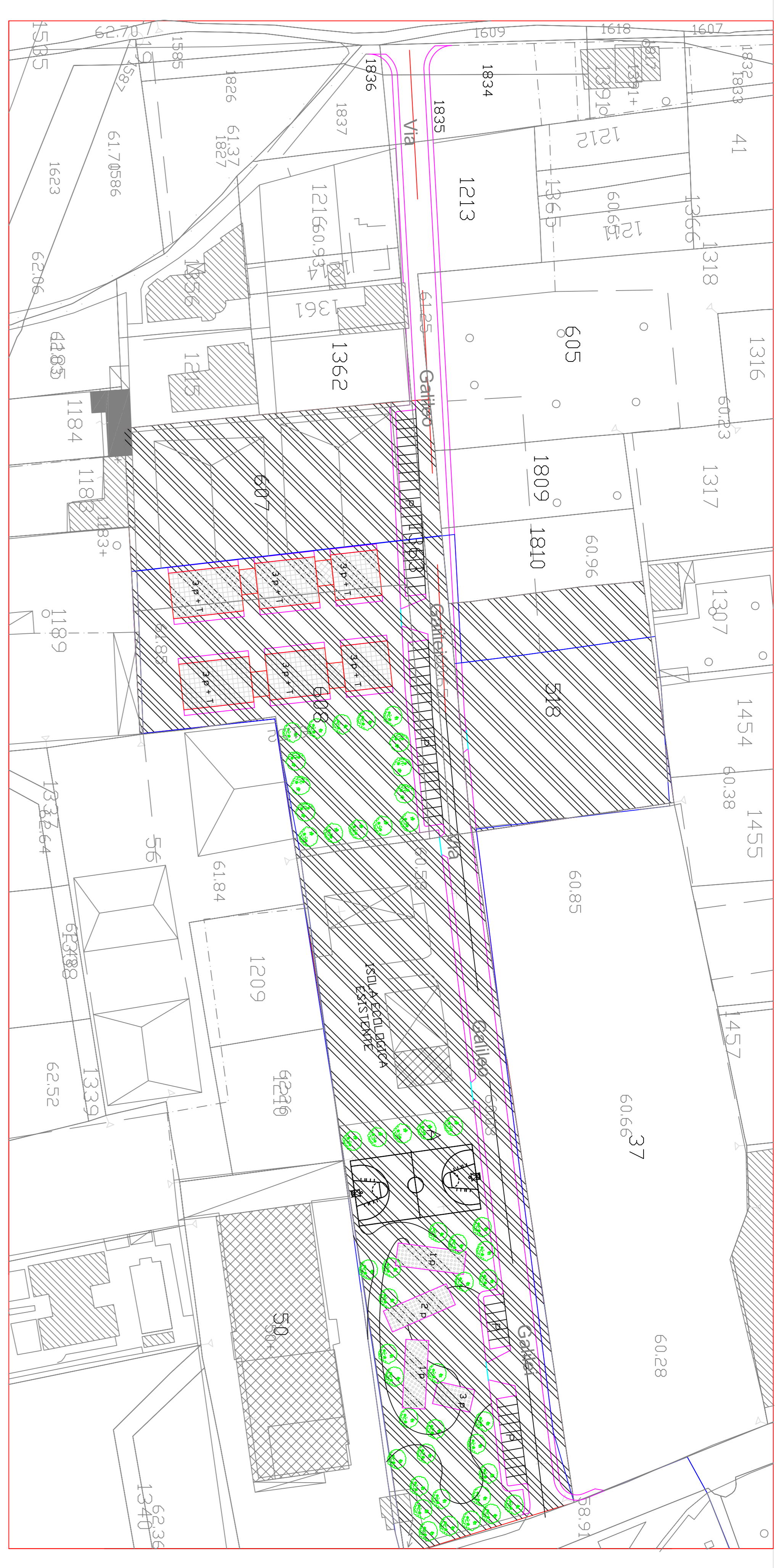




48 alloggi a canone sostenibile  
- PROGETTO DEFINITIVO -

PROGETTO  
D1 PLANIMETRIE E PLANOVOLUMTRICO

IL SINDACO : dott. Alessandro GRIMALDI  
PROGETTISTA : ing. Giovanni CRISTIANO  
arch. Gabriella CRISTIANO  
DATA : 04/04/2022  
AGGIORNAMENTO : 05/05/2022



LOTTO A	
Sublotto A - Destinazione:	mq 3.207,00
FIG. 4 Part. 608	mq 3.207,00
FIG. 4 Part. 607	mq 3.510,00
TOTALE	mq 6.717,00
Sublotto Invegnato	mq 4.448,90

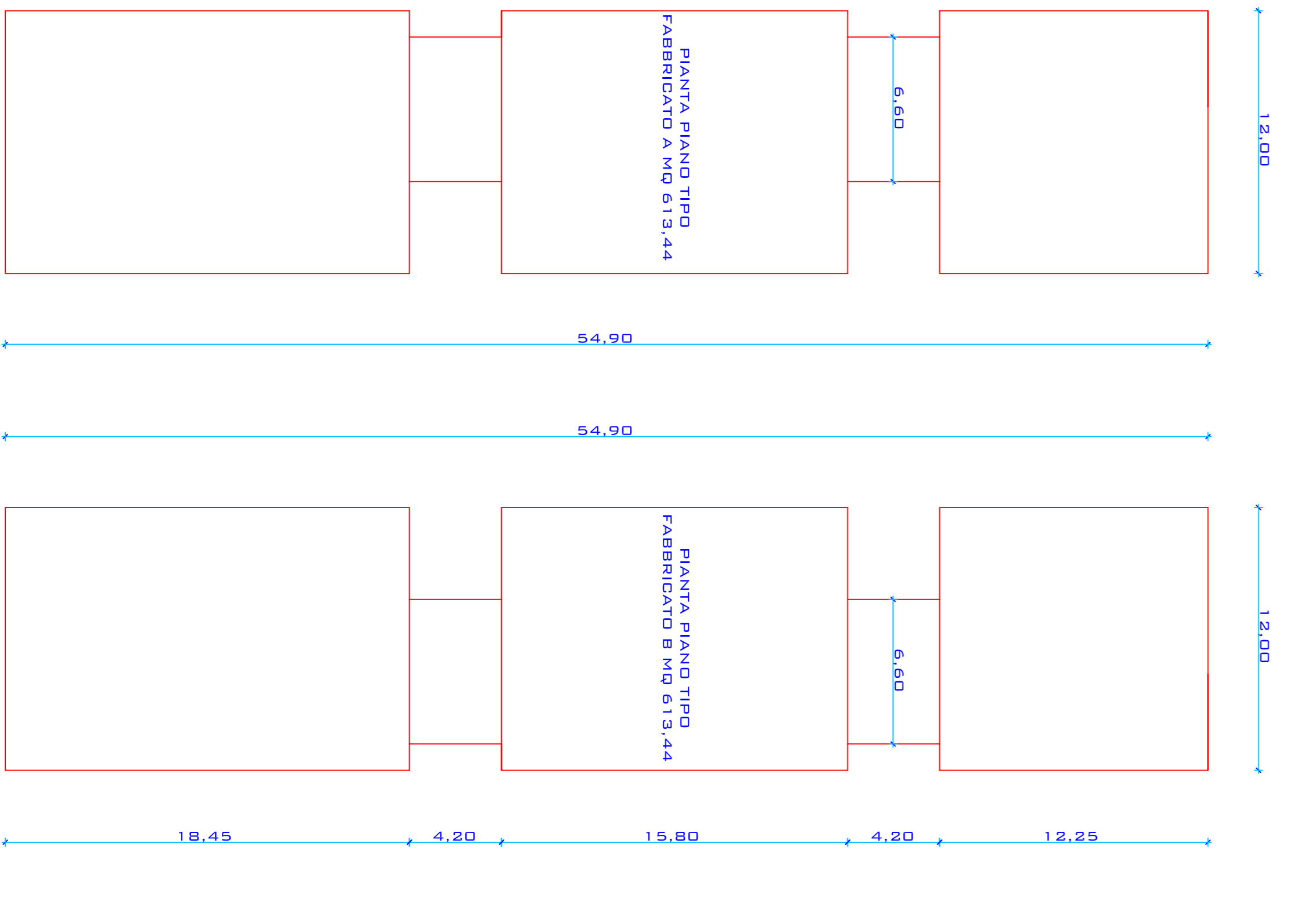
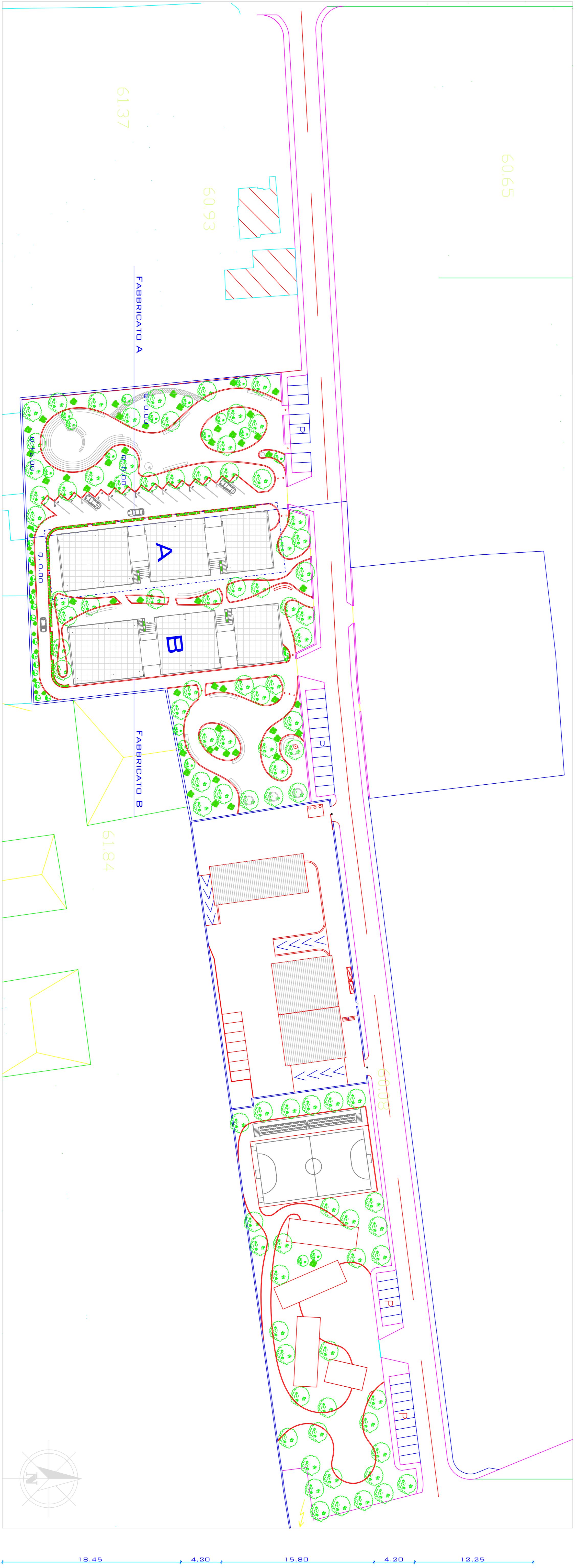
LOTTO B	
Sublotto A - Destinazione:	mq 3.028,00
FIG. 4 Part. 918	mq 3.028,00
TOTALE	mq 3.028,00
Sublotto Invegnato	mq 2.255,00

LOTTO C	
Sublotto A - Destinazione:	mq 8.415,00
FIG. 4 Part. A	mq 8.415,00
TOTALE	mq 8.415,00
Sublotto Invegnato	mq 3.745,00

TOTALE SUBLOTTO INVEGNATO A + B + C	
LOTTO A	mq 4.448,90
LOTTO B	mq 2.255,00
LOTTO C	mq 3.745,00
TOTALE	mq 10.448,90
TOTALE SUBLOTTO INVEGNATO	mq 10.448,90



ALLOGGIO TIPO A - B - C	
SUM. NETTA APP. TIPOLOGIA B	mq 65,24
SUM. NETTA APP. TIPOLOGIA A	mq 41,72
SUM. NETTA APP. TIPOLOGIA C	mq 59,96

PLANOVOLUMTRICO	
<p>Sublotto A - Destinazione:</p> <p>FIG. 4 Part. 608</p> <p>FIG. 4 Part. 607</p> <p>TOTALE</p> <p>Sublotto Invegnato</p>	<p>mq 3.207,00</p> <p>mq 3.510,00</p> <p>mq 6.717,00</p> <p>mq 4.448,90</p>
<p>Sublotto A - Destinazione:</p> <p>FIG. 4 Part. 918</p> <p>TOTALE</p> <p>Sublotto Invegnato</p>	<p>mq 3.028,00</p> <p>mq 3.028,00</p> <p>mq 2.255,00</p>
<p>Sublotto A - Destinazione:</p> <p>FIG. 4 Part. A</p> <p>TOTALE</p> <p>Sublotto Invegnato</p>	<p>mq 8.415,00</p> <p>mq 8.415,00</p> <p>mq 3.745,00</p>
<p>TOTALE SUBLOTTO INVEGNATO A + B + C</p> <p>LOTTO A</p> <p>LOTTO B</p> <p>LOTTO C</p> <p>TOTALE</p> <p>TOTALE SUBLOTTO INVEGNATO</p>	<p>mq 10.448,90</p> <p>mq 2.255,00</p> <p>mq 3.745,00</p> <p>mq 10.448,90</p> <p>mq 10.448,90</p>