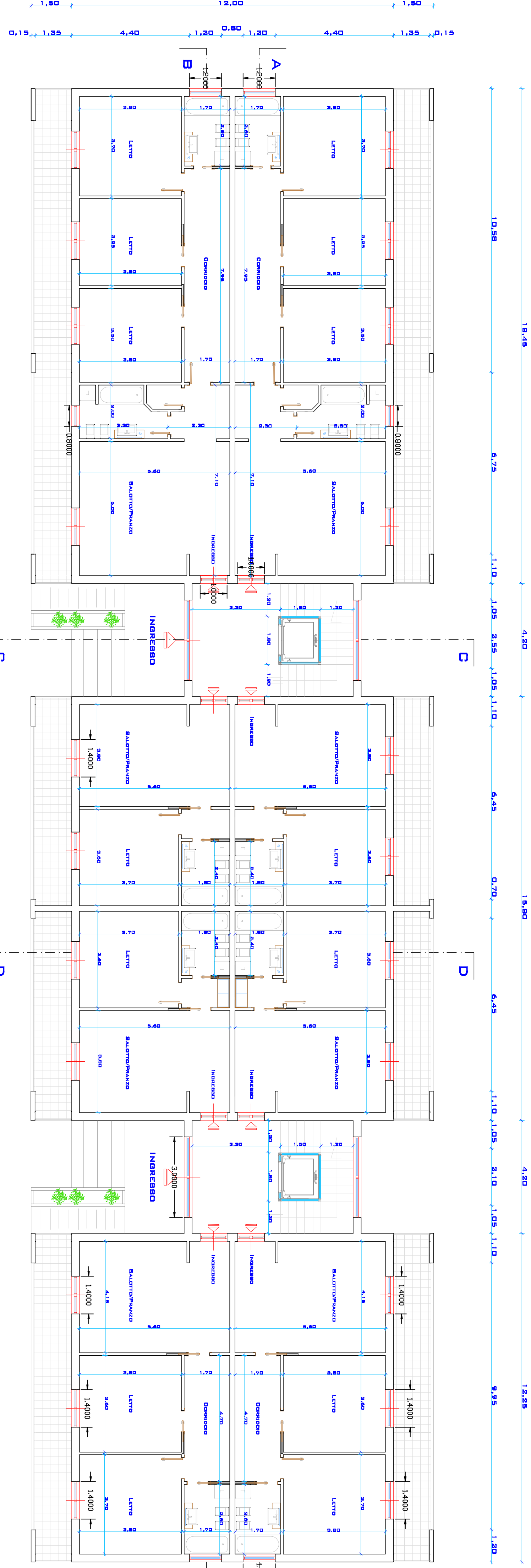


**48 alloggi a canone sostenibile
- PROGETTO DEFINITIVO -**

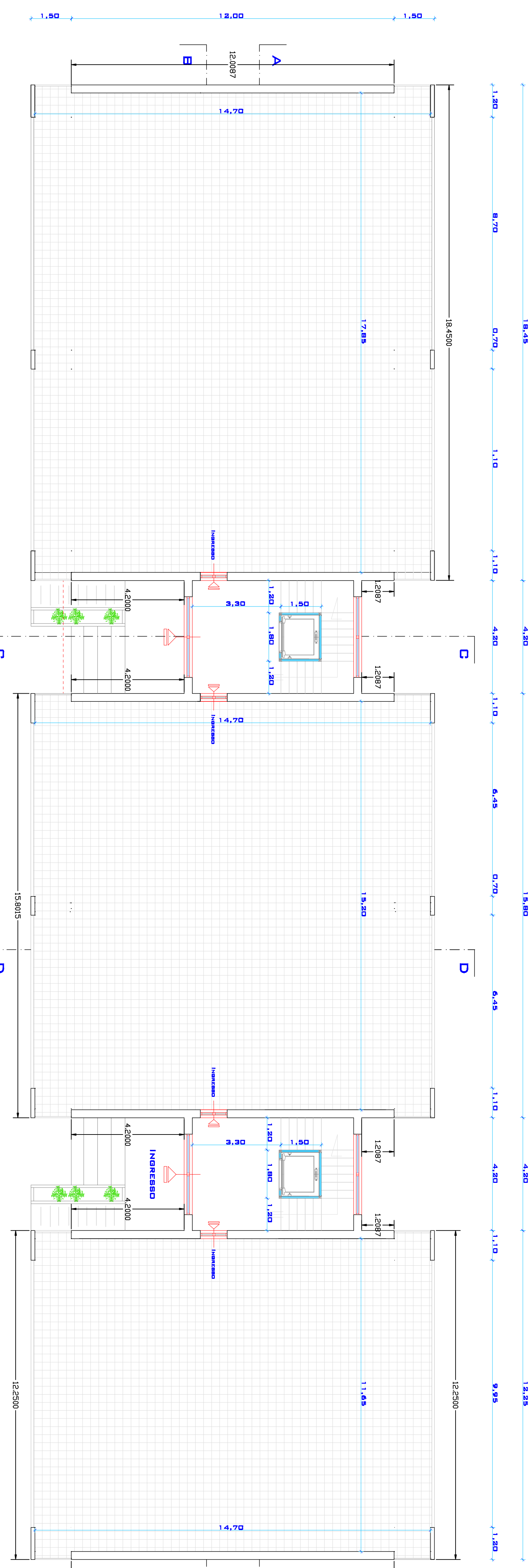
TAVOLA TIPOLOGIA
D2 PIANTE FABBRICATO A
NUMERO 1:100

IL SINDACO : dott. Alessandro CRIMALDI
PROGETTISTI : Ing. Giovanni CRISTIANO
arch. Gabriele CRISTIANO

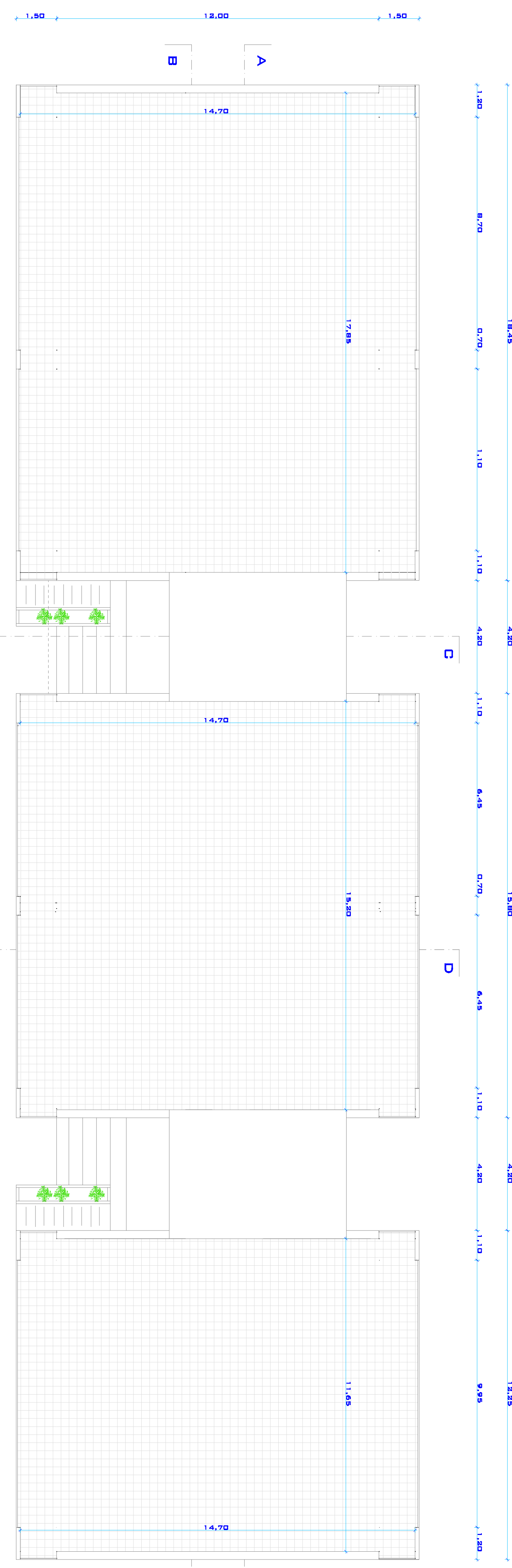
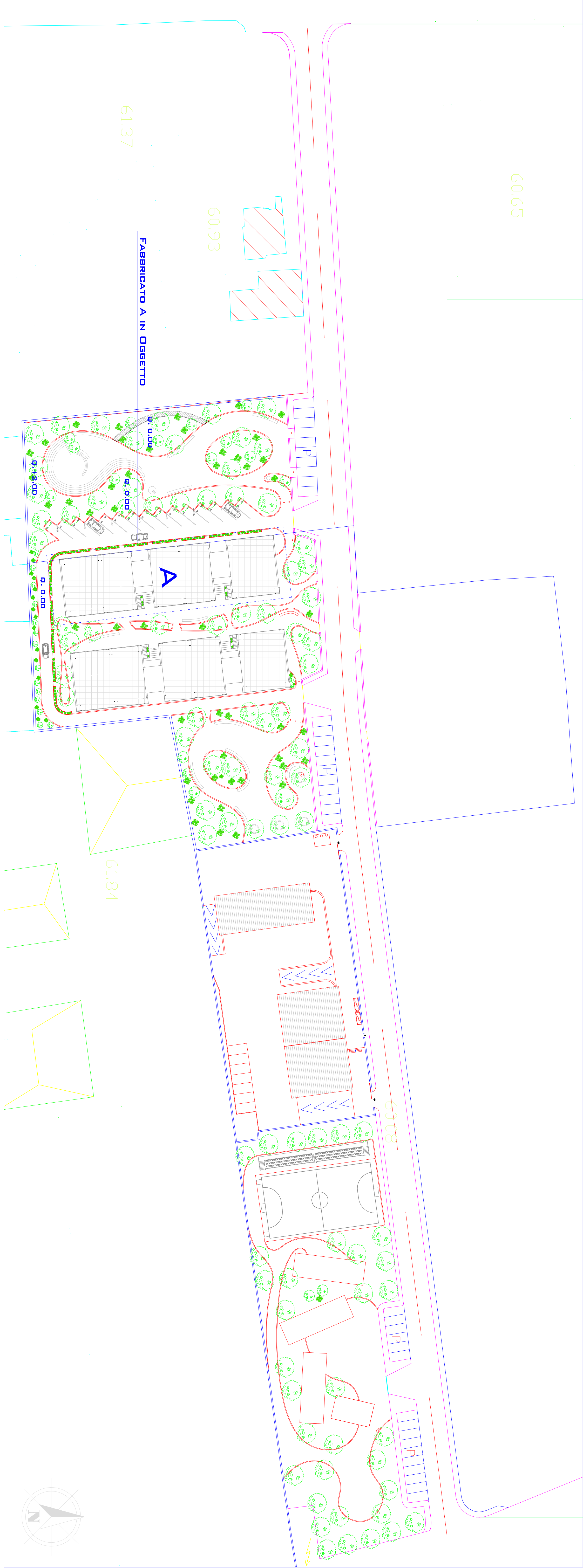
DATA 02/06/2017 AGGIORNAMENTO REVISIONE



PIANTA PIANO TIPO FABBRICATO A



PIANTA PIANO TERZO FABBRICATO A



PIANTA DELLE COPERTURE FABBRICATO A