

PROGRAMMA DI RIQUALIFICAZIONE URBANA
PER ALLOGGI A CANONE SOSTENIBILE
ALLOGGI DI EDILIZIA SOCIALE IN VIA GALILEO

**48 alloggi a canone sostenibile
- PROGETTO DEFINITIVO -**

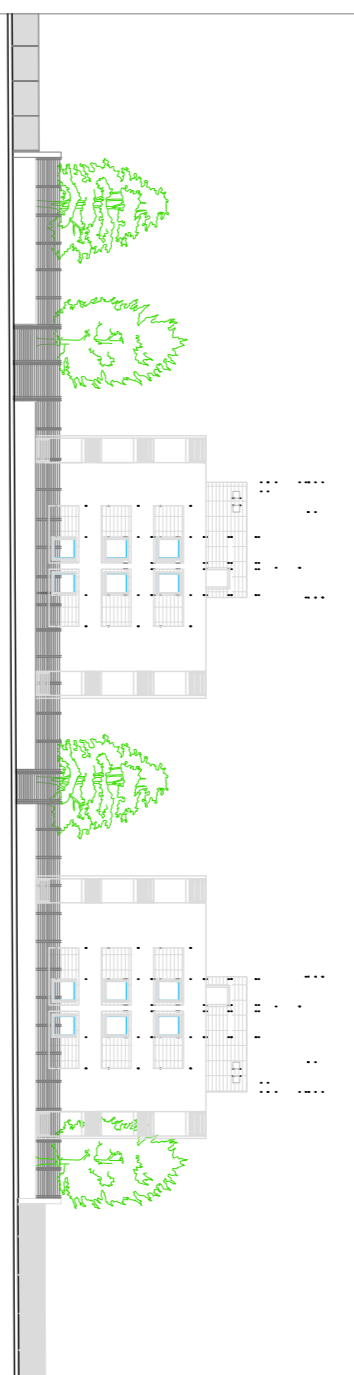


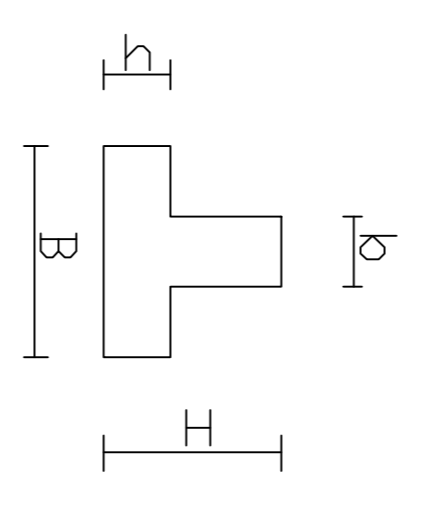
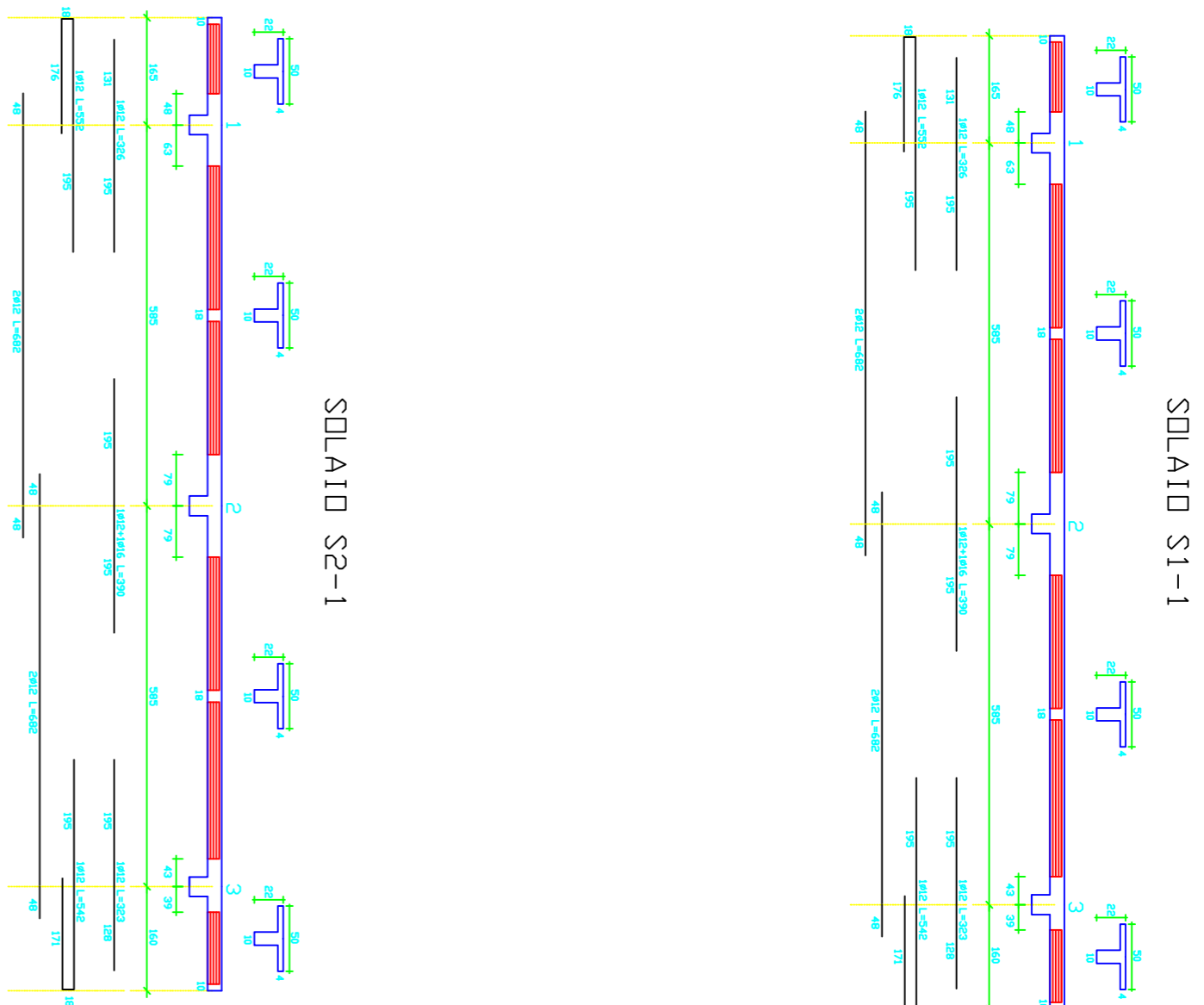
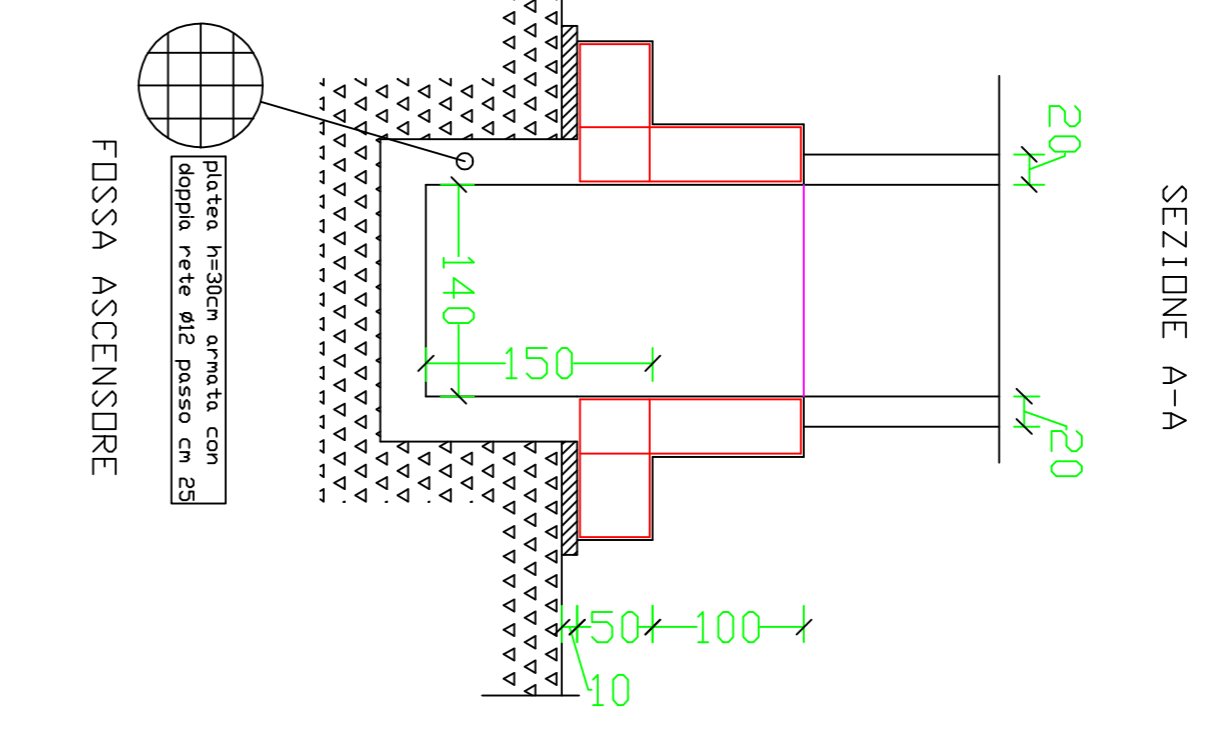
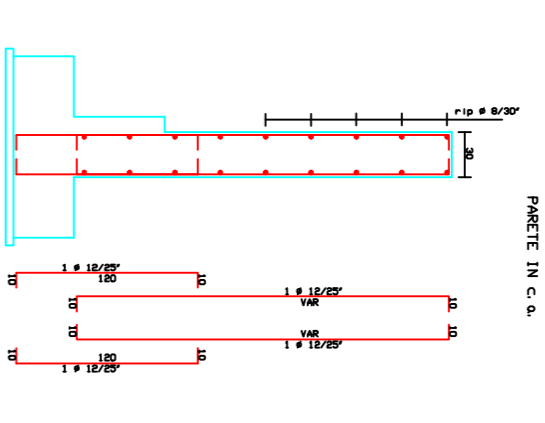
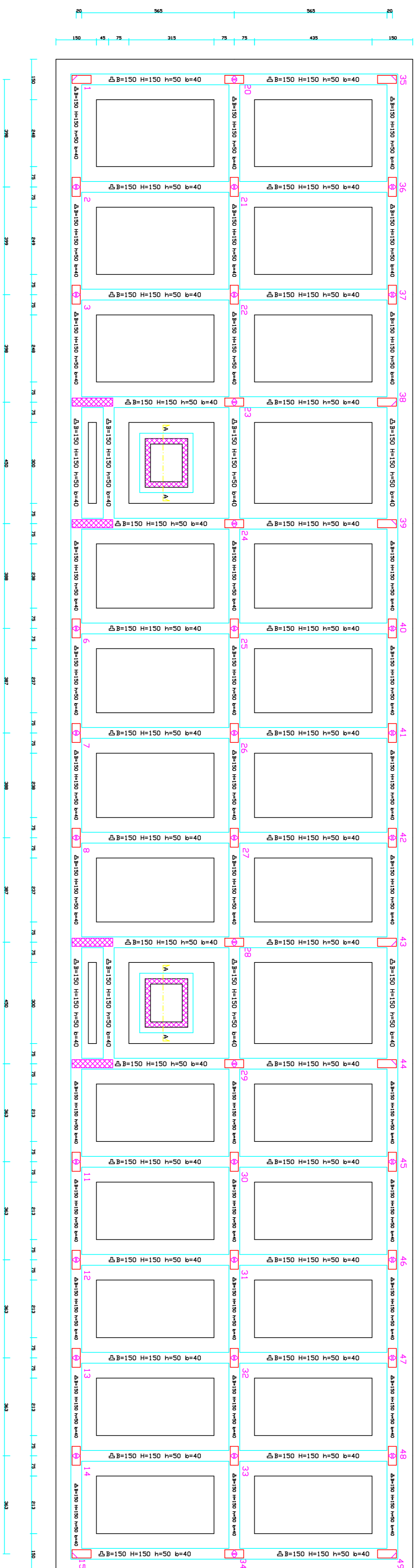
TAVOLA **D8** PIANTA FONDAZIONI,
CARPENTERIA PRIMO E SECONDO IMPALCATO
FABBRICATO A-B

NUMERO
1-100

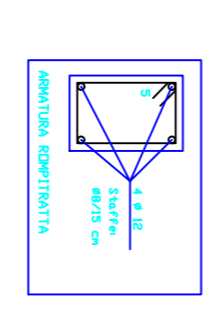
IL SINDACO : **dott. Alessandro GRIMALDI**
PROGETTISTI: **Ing. Giovanni CRISTIANO**
arch. Gabriele CRISTIANO

DATA **Giugno 2012** AGGIORNAMENTO **REVISIONE**

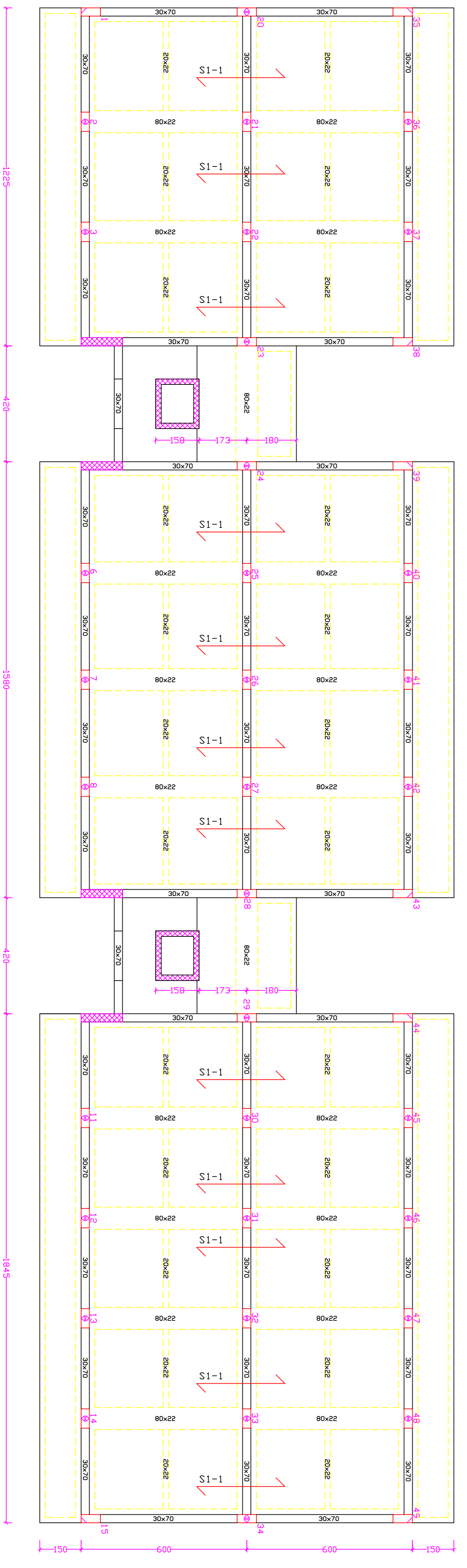
Pianta fondazioni



SOLAIO H=22 cm
rete $\varnothing 8/25 \times 25$
SOLAIO IN OPERA



Carpenteria I impalcato



Carpenteria II impalcato

