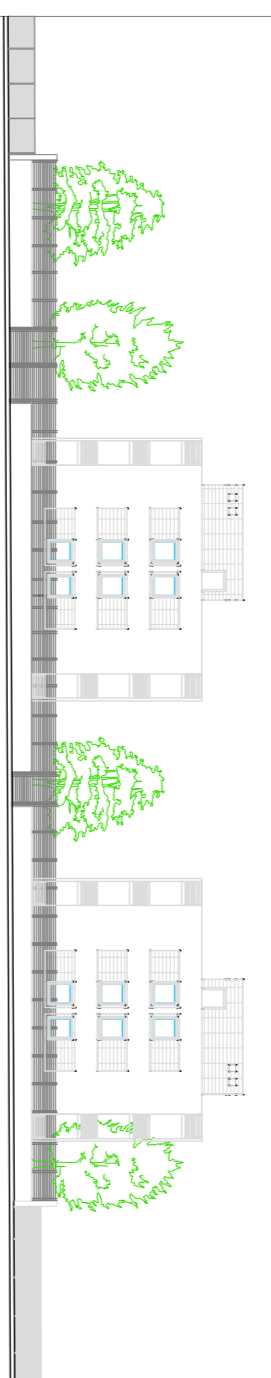




PROGRAMMA DI RIQUALIFICAZIONE URBANA
PER ALLOGGI A CANONE SOSTENIBILE
ALLOGGI DI EDILIZIA SOCIALE IN VIA GALILEO



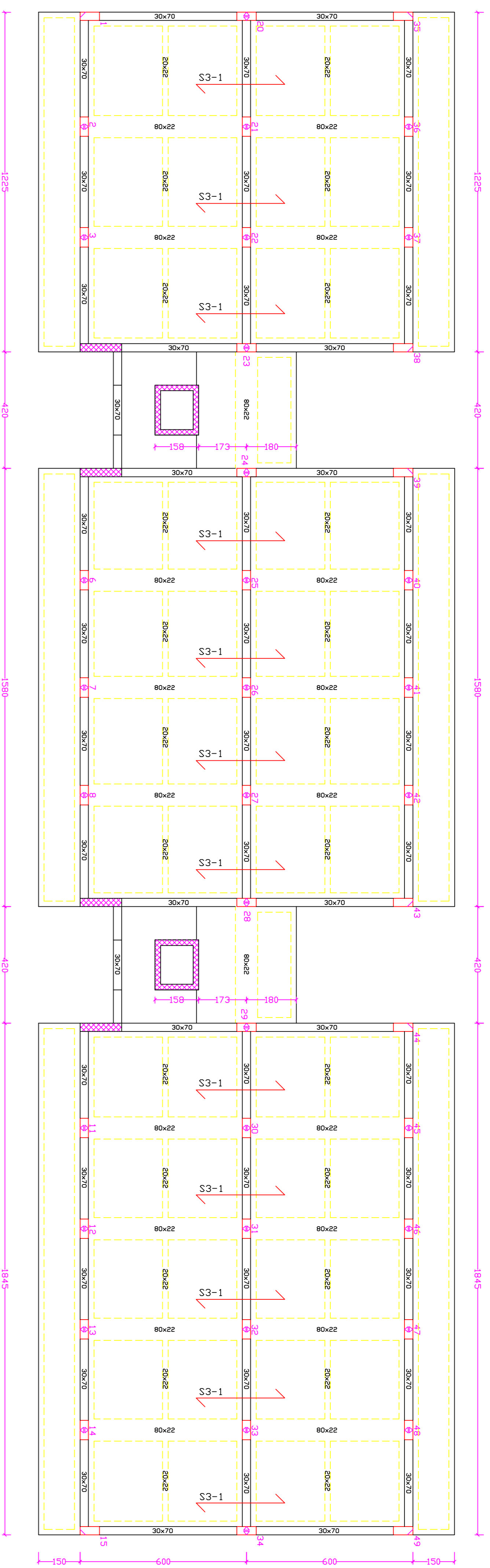
**48 alloggi a canone sostenibile
- PROGETTO DEFINITIVO -**

TAVOLA Titolo CARPENTERIA TERZO E QUARTO IMPALCATO Rapporto 1:100
D9 FABBRICATO A-B

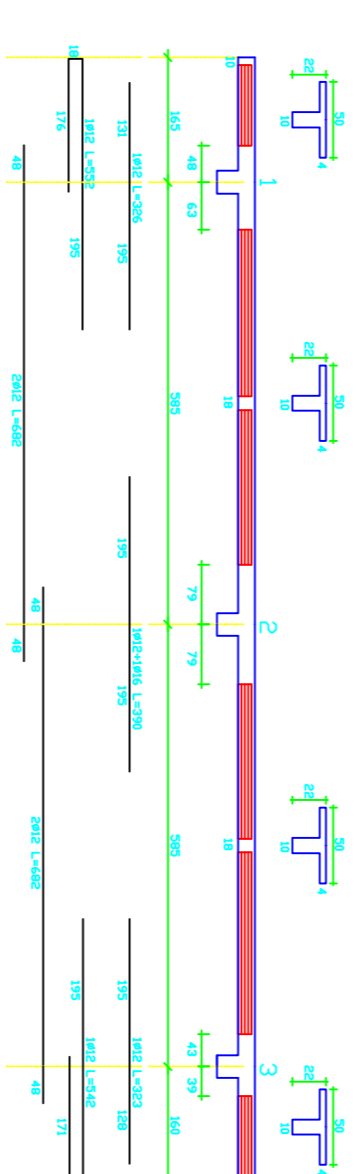
IL SINDACO : dott. Alessandro GRIMALDI
PROGETTISTI: Ing. Giovanni CRISTIANO
Arch. Gabriele CRISTIANO

DATA: Gennaio 2012
AGGIORNAMENTO: REVISIONE

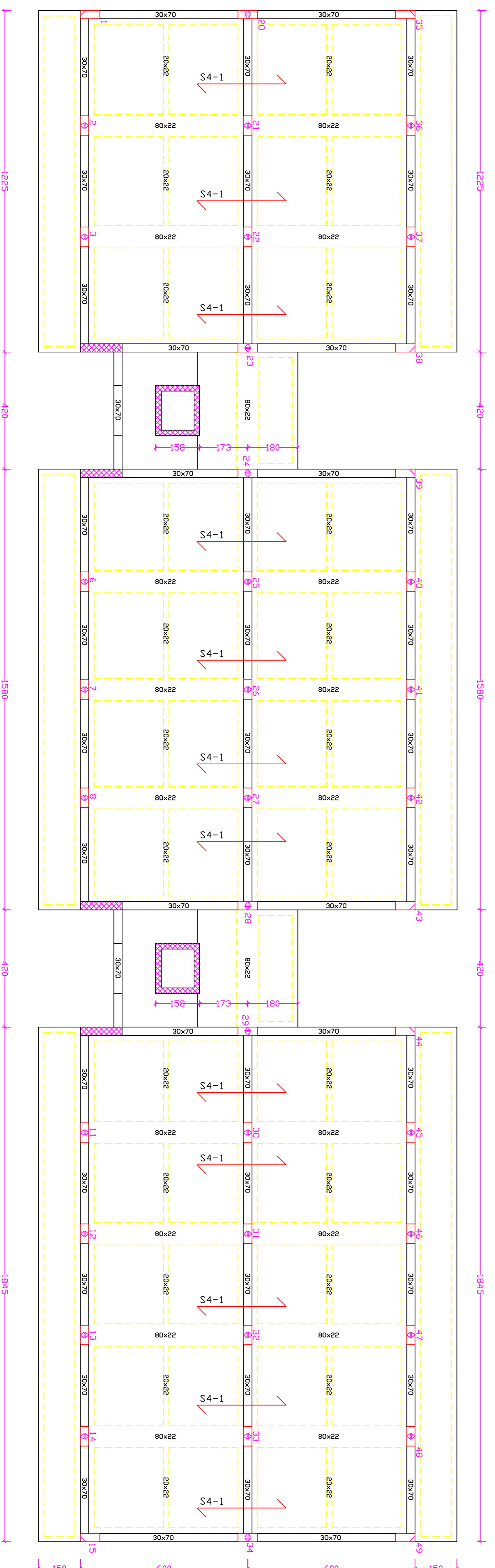
Carpenteria III impalcato



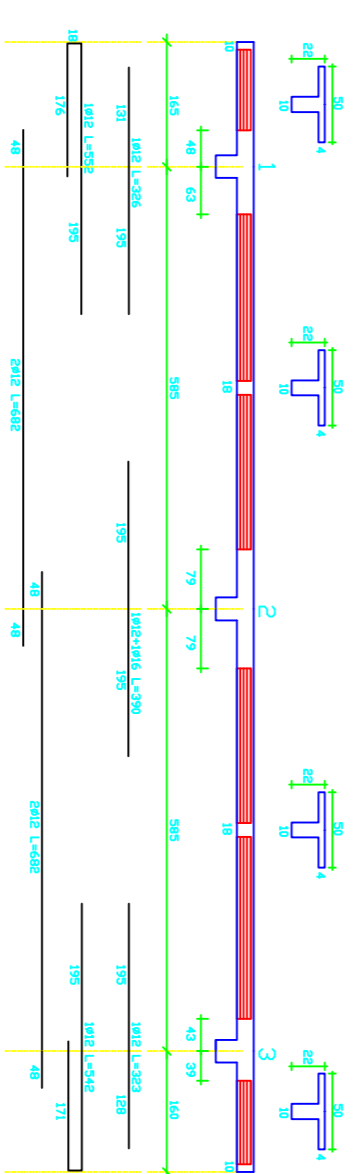
SOLAIO S3-1



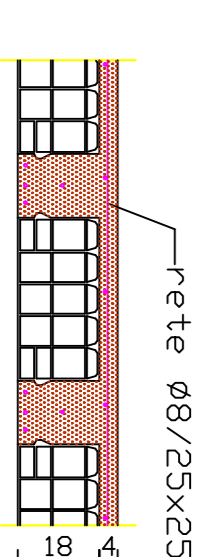
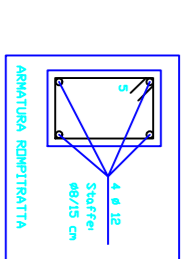
Carpenteria IV impalcato



SOLAIO S4-1



SOLAIO H=22 CM



SOLAIO IN OPERA